

RUISSÉAU

THE CAMDEN

3-4 Bedrooms | 2.5-3.5 Bathrooms | 2-Car Garage | 2,498+ Square Feet



STANDARD FEATURES:

Elegant 3 Bedroom | 3 Bath Two-Story Home | Study
Second Floor Bonus/3rd Bedroom, Full Bath and Storage Room
First Floor Owner's Suite with Luxurious Bath and Walk-in Shower with Bench Seat
Island Kitchen Opens to Dining and Great Room
Private Covered Porch and Fenced Courtyard Retreat

QUALITY OF LIFE | INSPIRED DESIGN | INTOWN LIVING

A COMMUNITY FOR ALL AGES FROM THE \$500s

138 Kingwood Drive | Woodstock, GA 30188 | 770.516.3678 | WindsongLife.com

6.27.23



All illustrations, specifications, pricing and details are believed correct at the time of publication, Windsong Properties reserves the right to make changes, without notice or obligation. This brochure is for illustrative purposes only and not part of a legal contract. Information subject to changes, errors and omissions.
© 2023 Windsong Properties



THE CAMDEN



ELEVATION A



ELEVATION B



ELEVATION C



ELEVATION D

QUALITY OF LIFE | INSPIRED DESIGN | INTOWN LIVING

A COMMUNITY FOR ALL AGES FROM THE \$500s

138 Kingwood Drive | Woodstock, GA 30188 | 770.516.3678 | WindsongLife.com

6.27.23



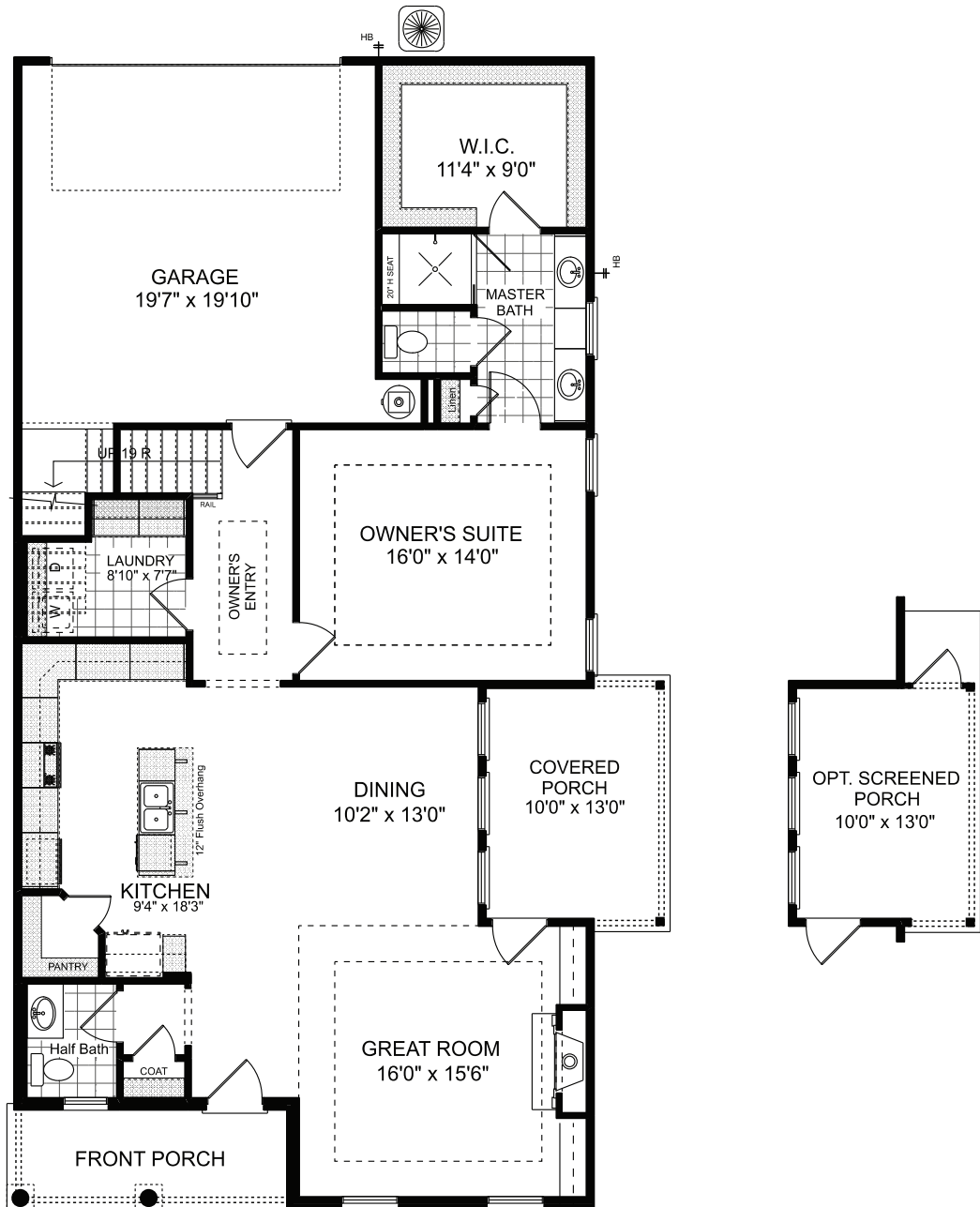
All illustrations, specifications, pricing and details are believed correct at the time of publication, Windsong Properties reserves the right to make changes, without notice or obligation. This brochure is for illustrative purposes only and not part of a legal contract. Information subject to changes, errors and omissions.
© 2023 Windsong Properties



THE CAMDEN

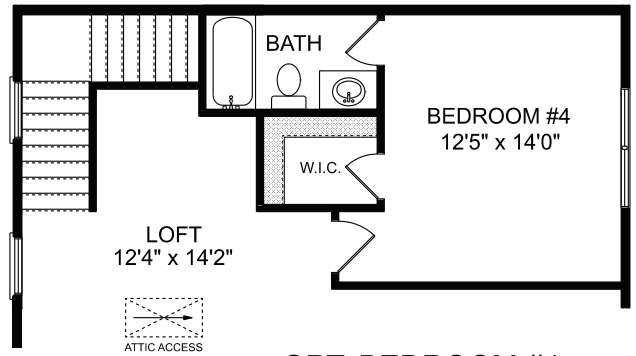
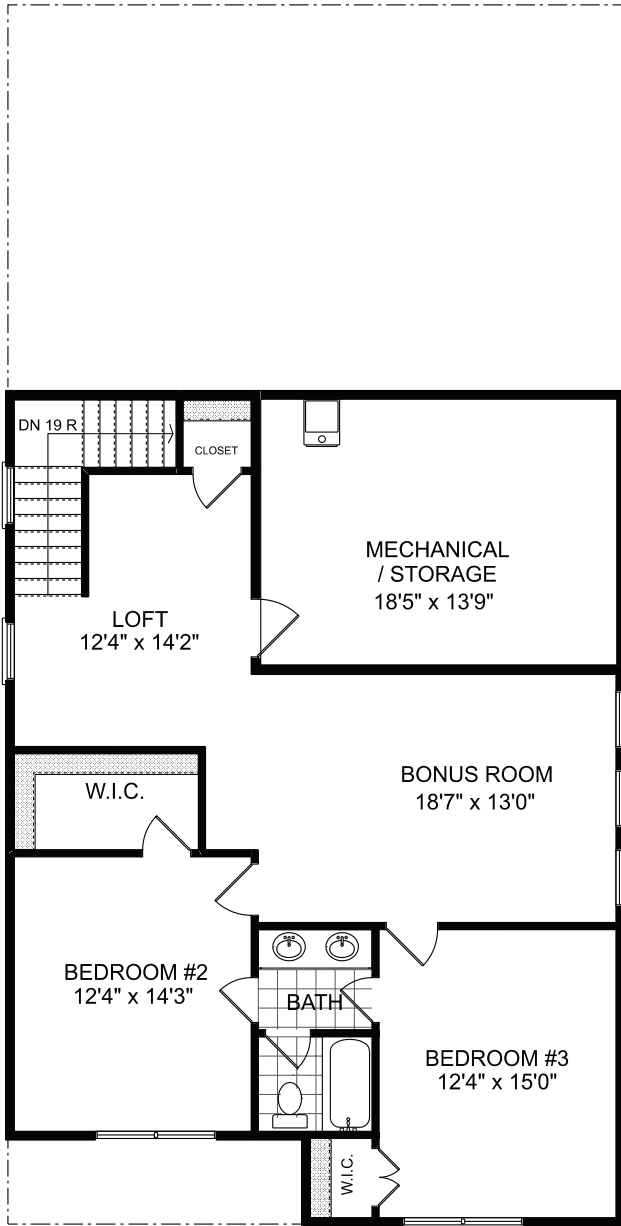
3-4 Bedrooms | 2.5-3.5 Bathrooms | 2-Car Garage | 2,498+ Square Feet

FIRST FLOOR

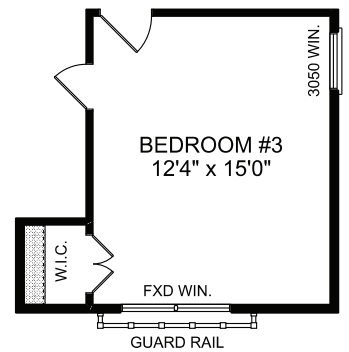


RUISSÉAU

SECOND FLOOR



OPT. BEDROOM #4
+260 HEATED AREA



"D" ELEVATION